

JERA ENOSI E.O.S. IULIO ELITE
DELTA FIL ROUGE 5th ELEMENT
OXI UP SCHERMI PIEGO CHIUDO
SEGUO SHARE CUBO PRONTO
CONTENITORI UNIVERSALI
I-MEET NICE POINT JAVA PAUSA
CONVIVIO FUNGO SEGNO
ICARO REGOLO KYOTO PODIO
LEAD JERA SCENA NEOCHAIR
TRAMA ATHENA FORMEN
GALASSIA **DOLLY STAR SISTEMA**
CAST CIAK PRIMA RASSEGNA
ESSAI HELLÒ OSCAR BROADWAY
F01 F02 F03 F04 F05 REGIA
VEDETTE FICTION TROUPE
ZOOM SUPEROTTO PROVINO
SELLO F01 BENCH F03 BENCH
MOVIE TRUKA JERA24 FESTIVAL
JETSET JERA22 TREND SET22
DOMUS DRIVE IN DIVO FLAGS
TRAILER WORKLAND

Oscar

Massimo Costaglia



Lo schienale con scocca in due colori accoglie reti nere e grigie.

The backrest with its two colour frame holds black and grey mesh finishing.

Le dossier avec châssis en deux couleurs reçoit la maille noire ou grise.

cod. 615



cod. 616



La ricca cartella rivestimenti, consente abbinamenti del tutto nuovi fino all'impiego della rete per schienale e seduta imbottita.

The rich palette of finishes allows new combinations which include mesh backrests and upholstered seats.

La grande variété des revêtements permet des combinaisons complètement neuves, comme dans le cas de l'utilisation de la maille pour le dossier et du rembourrage pour l'assise.

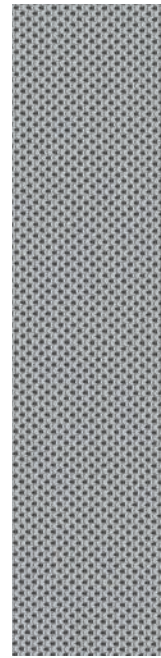


cod. 587



← La seduta su slitta mantiene i caratteri formali della poltroncina.
The metal base frame version has the formal design of classic office chairs.
La chaise avec traineau maintient les critères formels d'un fauteuil.

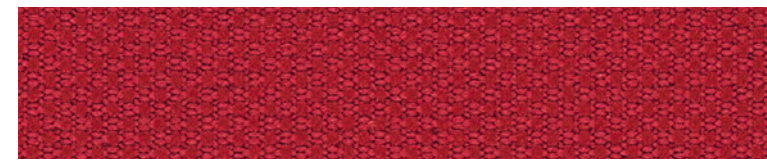
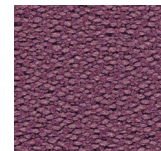




cod. 586



cod. 536



cod. 636

La versione interamente imbottita completa la collezione, potenziando la forza espressiva dei rivestimenti.

The fully upholstered version completes the collection and enhances the expressive power of the finishing.

La version complètement rembourré complète la collection, en augmentant la force expressive des revêtements.