

# 5th ELEMENT



2024

finiture | finishes | finitions

FINITURE E COLORI DISPONIBILI

FINISHES AND COLOURS AVAILABLE | FINITIONS ET COLORIS DISPONIBLES

Cat. B	CREPE			
	100% Poliestere FR-TREVIRA CS Peso: 330 gr/m² Martindale 100.000 cicli Ignifugo classe 1	100% Polyester FR-TREVIRA CS Weight: 330 gr/m² Martindale 100.000 turns Fire-retardant class 1 (one)	100% Polyester FR-TREVIRA CS Poids: 330 gr/m² Martindale 100.000 cycles Ignifuge classe 1	
				
522 - Grigio perla Light grey   Gris clair	525 - Avorio Ivory   Ivoire	528 - Verde acido Acid green   Vert acide	530 - Artico Arctic   Arctique	534 - Giallo Yellow   Jaune
				
523 - Grigio scuro Dark grey   Gris foncé	526 - Nocciola Hazel   Noisette	529 - Petrolio Petroleum   Pétrole	531 - Celeste Light blue   Bleu clair	535 - Arancio Orange   Orange
				
524 - Nero Black   Noir	527 - Malto Malt   Malt		532 - Cobalto Cobalt   Cobalt	536 - Vinaccio Wine red   Rouge vin
				
			533 - Blu Blue   Bleu	537 - Rosso Red   Rouge
				
				538 - Prugna Plum   Prune

<div>IT</div> <div>Il codice a tre cifre individua il colore della stoffa applicata nell'articolo / componente. Ogni partita di tessuto può presentare variazioni di tonalità rispetto sia al campionario sia ad elementi prodotti in tempi diversi.</div>	<div>EN</div> <div>The three-digit code identifies the colour of the fabric for each item / component. Each fabric batch can show colour differences compared to the fabric samples and to the products manufactured at different times.</div>	<div>FR</div> <div>Le code à trois chiffres identifie la couleur du tissu appliqué dans l'article / composant. Chaque morceau de tissu peut avoir des variations de ton en ce qui concerne à la fois l'échantillon et les éléments produits à des moments différents.</div>
<div>Leggere differenze di colore tra un lotto di produzione e l'altro, devono essere considerate nella norma. I colori stampati sono indicativi e potrebbero essere sostituiti o modificati nel tempo a discrezione di LAS.</div>	<div>Slight colour differences from lot to lot must be considered within commercial tolerances. Please consider that the colours in these pages are printed, so they can't be considered as real. They can be changed or modified in the life time by LAS.</div>	<div>De légères différences de couleur entre un lot de production et un autre sont absolument normales. Les couleurs imprimées sont approximatives et peuvent être changées ou bien modifiées à jugement de LAS.</div>

## Cat. C

### TIME



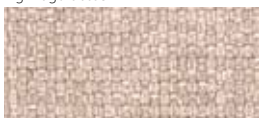
100% Poliestere RICICLATO GRS  
Peso: 350 gr/m<sup>2</sup>  
Martindale 100.000 cicli  
Ignifugo classe 1

100% Polyester RECYCLED GRS  
Weight: 350 gr/m<sup>2</sup>  
Martindale 100.000 turns  
Fire-retardant class 1 (one)

100% Polyester RECYCLÉ GRS  
Poids: 350 gr/m<sup>2</sup>  
Martindale 100.000 cycles  
Ignifuge classe 1



**C01 - Grigio**  
Grey | Gris



**C02 - Beige**  
Beige | Beige



**C04 - Verdino**  
Light green | Vert clair



**C06 - Avio**  
Navy blue | Bleu avio



**C09 - Tramonto**  
Sunset | Coucher



**C13 - Antracite**  
Anthracite | Anthracite



**C03 - Tortora**  
Grey beige | Gris tourterelle



**C05 - Verde**  
Green | Vert



**C07 - Oltremare**  
Ultramarine | Outremer



**C10 - Arancio**  
Orange | Orange



**C08 - Petrolio**  
Petroleum | Pétrole



**C11 - Mattone**  
Brick red | Rouge brique



**C12 - Melograno**  
Pomegranate | Grenade

## Cat. C

### ONE



100% Poliestere RICICLATO  
Peso: 350 gr/m<sup>2</sup>  
Martindale 100.000 cicli  
Ignifugo classe 1

100% Polyester RECYCLED  
Weight: 350 gr/m<sup>2</sup>  
Martindale 100.000 turns  
Fire-retardant class 1 (one)

100% Polyester RECYCLÉ  
Poids: 350 gr/m<sup>2</sup>  
Martindale 100.000 cycles  
Ignifuge classe 1



**C25 - Grigio**  
Grey | Gris



**C28 - Tortora**  
Grey beige | Gris tourterelle



**C29 - Verde acido**  
Acid green | Vert acide



**C32 - Pervinca**  
Periwinkle | Pervenche



**C35 - Ocra**  
Ocher | Ocre



**C26 - Antracite**  
Anthracite | Anthracite



**C30 - Verde**  
Green | Vert



**C33 - Avio**  
Navy blue | Bleu avio



**C36 - Rosso**  
Red | Rouge



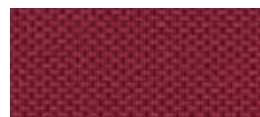
**C27 - Nero**  
Black | Noir



**C31 - Petrolio**  
Petroleum | Pétrole



**C34 - Blu**  
Blue | Bleu



**C37 - Bordeaux**  
Bordeaux | Bordeaux

## Cat. D

### STRETCH



100% Poliestere FR RICICLATO  
Peso: 340 gr/m<sup>2</sup>  
Martindale 50.000 cicli  
Ignifugo classe 1

100% Polyester FR RECYCLED  
Weight: 340 gr/m<sup>2</sup>  
Martindale 50.000 turns  
Fire-retardant class 1 (one)

100% Polyester FR RECYCLÉ  
Poids: 340 gr/m<sup>2</sup>  
Martindale 50.000 cycles  
Ignifuge classe 1



**586 - Grigio**  
Grey | Gris



**589 - Tortora**  
Grey beige | Gris tourterelle



**591 - Verde acido**  
Acid green | Vert acide



**593 - Azzuro sky**  
Sky blue | Bleu sky



**595 - Giallo fnesia**  
Freesia yellow | Jaune freesia



**587 - Antracite**  
Anthracite | Anthracite



**592 - Verde bosco**  
Wood green | Vert forêt



**594 - Blu**  
Blue | Bleu



**597 - Rosso**  
Red | Rouge



**588 - Nero**  
Black | Noir

## Cat. D

### MELANGE



100% Poliestere FR RICICLATO  
Peso: 340 gr/m<sup>2</sup>  
Martindale 50.000 cicli  
Ignifugo classe 1

100% Polyester FR RECYCLED  
Weight: 340 gr/m<sup>2</sup>  
Martindale 50.000 turns  
Fire-retardant class 1 (one)

100% Polyester FR RECYCLÉ  
Poids: 340 gr/m<sup>2</sup>  
Martindale 50.000 cycles  
Ignifuge classe 1



**603 - Cenere**  
Ash | Cendre



**607 - Nocciola**  
Hazel | Noisette



**601 - Salvia**  
Sage green | Vert Saugé



**612 - Azzurro**  
Azure | Azur



**614 - Petunia**  
Petunia | Pétunia



**604 - Grigio**  
Grey | Gris



**608 - Verde acido**  
Acid green | Vert acide



**602 - Blu**  
Blue | Bleu



**605 - Fumo**  
Smoke | Fumée



**609 - Muschio**  
Moss green | Vert mousse



**600 - Antracite**  
Anthracite | Anthracite



**610 - Verdone**  
Dark green | Vert foncé

Cat. D

TREVI



100% Poliestere FR - TREVIRA CS  
Peso: 450 gr/m<sup>2</sup>  
Martindale 70.000 cicli  
Ignifugo classe 1

100% Polyester FR - TREVIRA CS  
Weight: 450 gr/m<sup>2</sup>  
Martindale 70.000 turns  
Fire-retardant class 1 (one)

100% Polyester FR - TREVIRA CS  
Poids: 450 gr/m<sup>2</sup>  
Martindale 70.000 cycles  
Ignifuge classe 1



**624 - Nero**  
Black | Noir



**617 - Avorio**  
Ivory | Ivoire



**618 - Salvia**  
Sage green | Vert Sauge



**619 - Cesio**  
Cesium | Césium



**620 - Pesca**  
Peach | Pêche



**625 - Tortora**  
Grey beige | Gris tourterelle



**632 - Blu**  
Blue | Bleu



**634 - Mattone**  
Brick red | Rouge brique



**636 - Rosso**  
Red | Rouge



**638 - Bordeaux**  
Bordeaux | Bordeaux



## Cat. E

### LANA



75% Lana - 25% Poliammide  
Peso: 335 gr/m<sup>2</sup>  
Martindale 100.000 cicli

75% Wool - 25% Polyamide  
Weight: 335 gr/m<sup>2</sup>  
Martindale 100.000 turns

75% Laine - 25% Polyamide  
Poids: 335 gr/m<sup>2</sup>  
Martindale 100.000 cycles



**642 - Grigio chiaro**  
Light grey | Gris clair



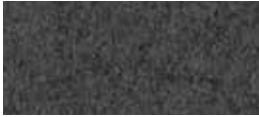
**645 - Tortora**  
Grey beige | Gris tourterelle



**647 - Verde acido**  
Acid green | Vert acide



**649 - Artico**  
Arctic | Arctique



**643 - Grigio scuro**  
Dark grey | Gris foncé



**648 - Muschio**  
Moss green | Vert mousse



**650 - Malibú**  
Malibu | Malibu



**652 - Avio**  
Navy blue | Bleu avio



**652 - Avio**  
Navy blue | Bleu avio

## Cat. E

### NAUTILUS



100% Poliestere riciclato - certificato  
SEAQUAL  
Peso: 410 gr/m<sup>2</sup>  
Martindale 100.000 cicli

100% Recycled Polyester - SEAQUAL  
Certified  
Weight: 410 gr/m<sup>2</sup>  
Martindale 100.000 turns

100% Recycled Polyester - SEAQUAL  
Certified  
Poids: 410 gr/m<sup>2</sup>  
Martindale 100.000 cycles



**E01 - Pietra**  
Stone | Pierre



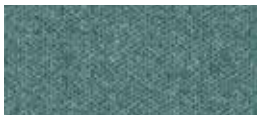
**E02 - Grigio**  
Grey | Gris



**E03 - Nero**  
Black | Noir



**E04 - Acqua**  
Water | Eau



**E05 - Verde**  
Green | Vert



**E06 - Prato**  
Lawn | Pelouse



**E07 - Verdone**  
Dark green | Vert foncé



**E08 - Ceruleo**  
Cerulean | Céruléen



**E09 - Azzurro**  
Azure | Azur



**E10 - Pervinca**  
Periwinkle | Pervenche



**E11 - Blu**  
Blue | Bleu



**E12 - Melograno**  
Pomegranate | Grenade



**E13 - Bordeaux**  
Bordeaux | Bordeaux

Cat. F



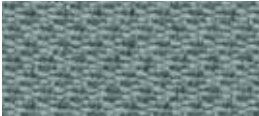
SEALIFE



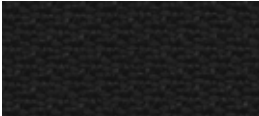
100% Poliestere riciclato - certificato  
SEAQUAL  
Peso: 330 gr/m<sup>2</sup>  
Martindale 100.000 cicli  
Ignifugo classe 1

100% Recycled Polyester - SEAQUAL  
Certified  
Weight: 330 gr/m<sup>2</sup>  
Martindale 100.000 turns  
Fire-retardant class 1 (one)

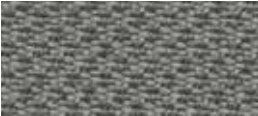
100% Recycled Polyester - SEAQUAL  
Certified  
Poids: 330 gr/m<sup>2</sup>  
Martindale 100.000 cycles  
Ignifuge classe 1



**F01 - Grigio**  
Grey | Gris



**F02 - Nero**  
Black | Noir



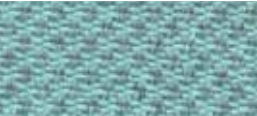
**F03 - Fango**  
Mud | Boue



**F04 - Muschio**  
Moss green | Vert mousse



**F05 - Verde**  
Green | Vert



**F06 - Acqua**  
Water | Eau



**F07 - Celeste**  
Light blue | Bleu clair



**F08 - Azzurro**  
Azure | Azur



**F09 - Blu**  
Blue | Bleu



**F10 - Ocre**  
Ocher | Ocre



**F11 - Mattone**  
Brick red | Rouge brique



**F12 - Melograno**  
Pomegranate | Grenade

## Cat. G

### MIXAGE



100% Trevira CS  
Peso: 400 gr/m<sup>2</sup>  
Martindale 70.000 cicli  
Ignifugo classe 1

100% Trevira CS  
Weight: 400 gr/m<sup>2</sup>  
Martindale 70.000 turns  
Fire-retardant class 1 (one)

100% Trevira CS  
Poids: 400 gr/m<sup>2</sup>  
Martindale 70.000 cycles  
Ignifuge classe 1



**G15 - Grigio**  
Grey | Gris



**G17 - Beige**  
Beige | Beige



**G19 - Muschio**  
Moss green | Vert mousse



**G21 - Oltremare**  
Ultramarine | Outremer



**G26 - Giallo**  
Yellow | Jaune



**G16 - Nero**  
Black | Noir



**G18 - Tortora**  
Grey beige | Gris tourterelle



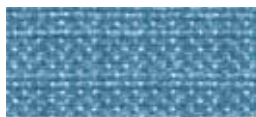
**G20 - Verde**  
Green | Vert



**G22 - Celeste**  
Light blue | Bleu clair



**G27 - Ambra**  
Amber | Ambre



**G23 - Cielo**  
Sky | Ciel



**G24 - Avio**  
Navy blue | Bleu avio



**G25 - Blu**  
Blue | Bleu

## Cat. G

### SPAZIO

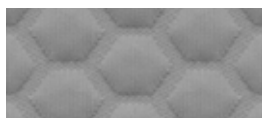


100% Poliestere RICICLATO  
Peso: 635 gr/m<sup>2</sup>  
Martindale 50.000 cicli  
Ignifugo classe 1



100% Polyester RECYCLED  
Weight: 635 gr/m<sup>2</sup>  
Martindale 50.000 turns  
Fire-retardant class 1 (one)

100% Polyester RECYCLÉ  
Poids: 635 gr/m<sup>2</sup>  
Martindale 50.000 cycles  
Ignifuge classe 1



**G35 - Grigio**  
Grey | Gris



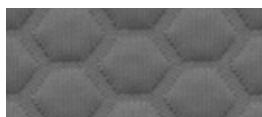
**G38 - Verde acido**  
Acid green | Vert acide



**G41 - Pervinca**  
Periwinkle | Pervenche



**G43 - Ocra**  
Ocher | Ocre



**G36 - Antracite**  
Anthracite | Anthracite



**G39 - Verde**  
Green | Vert



**G42 - Blu**  
Blue | Bleu



**G44 - Bordeaux**  
Bordeaux | Bordeaux



**G37 - Nero**  
Black | Noir



**G40 - Petrolio**  
Petroleum | Pétrole



## Cat. G



### POSEIDON

NEW



100% Poliestere riciclato - certificato  
SEAQUAL  
Peso: 500 gr/m<sup>2</sup>  
Martindale 100.000 cicli  
Ignifugo classe 1

100% Recycled Polyester - SEAQUAL  
Certified  
Weight: 500 gr/m<sup>2</sup>  
Martindale 100.000 turns  
Fire-retardant class 1 (one)

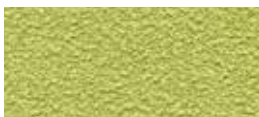
100% Recycled Polyester - SEAQUAL  
Certified  
Poids: 500 gr/m<sup>2</sup>  
Martindale 100.000 cycles  
Ignifuge classe 1



**G51 - Antracite**  
Anthracite | Anthracite



**G53 - Avorio**  
Ivory | Ivoire



**G55 - Verde**  
Green | Vert



**G56 - Azzurro**  
Azure | Azur



**G58 - Giallo**  
Yellow | Jaune



**G52 - Nero**  
Black | Noir



**G54 - Nocciola**  
Hazel | Noisette



**G57 - Blu**  
Blue | Bleu

## Cat. G

### SUPREME

NEW



50% PL-Poliestere / 35% AC-Acetato  
15% PA-Poliamidica  
Peso: 410 gr/m<sup>2</sup>  
Martindale 200.000 cicli  
Ignifugo classe 1

50% PL-Polyester / 35% AC-Acetate  
15% PA-Nylon  
Weight: 410 gr/m<sup>2</sup>  
Martindale 200.000 turns  
Fire-retardant class 1 (one)

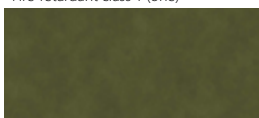
50% PL-Polyester / 35% AC-Acetate  
15% PA-Polyamide  
Poids: 410 gr/m<sup>2</sup>  
Martindale 200.000 cycles  
Ignifuge classe 1



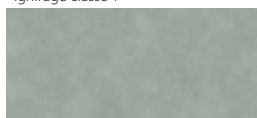
**G65 - Grigio**  
Grey | Gris



**G68 - Beige**  
Beige | Beige



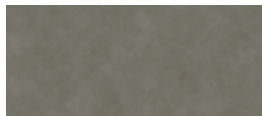
**G70 - Muschio**  
Moss green | Vert mousse



**G71 - Piombo**  
Lead | Plomb



**G73 - Ocra**  
Ocher | Ocre



**G66 - Antracite**  
Anthracite | Anthracite



**G69 - Tortora**  
Grey beige | Gris tourterelle



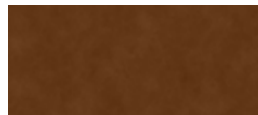
**G72 - Avio**  
Navy blue | Bleu avio



**G74 - Avana**  
Havana | Havane



**G67 - Nero**  
Black | Noir



**G75 - Ruggine**  
Russet | Rouille



**G76 - Rosso**  
Red | Rouge

GRAIN by Gabriel

92% Poliestere riciclato post consumo  
- 8% Poliestere

80% Poliestere riciclato post consumo - 20% Poliestere  
Peso: 439 gr/m<sup>2</sup>  
Martindale 100.000 cicli

92% Post-consumer recycled polyester  
- 8% Polyester

80% Post-consumer recycled polyester - 20% Polyester  
Weight: 439 gr/m<sup>2</sup>  
Martindale 100.000 turns

92% Polyester recyclé post-consommation - 8% Polyester

80% Polyester recyclé post-consommation - 20% Polyester  
Poids: 439 gr/m<sup>2</sup>  
Martindale 100.000 cycles



I01 - Avio  
Navy blue | Bleu avio



I05 - Oro  
Gold | Or



I02 - Jeans  
Jeans | Jeans



I06 - Ocra  
Ocher | Ocre



I03 - Cesio  
Cesium | Césium



I07 - Nudo  
Nude | Nude



I04 - Sera  
Evening | Soir



I08 - Cipria  
Powder pink | Rose poudre



I09 - Mattone  
Brick red | Rouge brique



I10 - Arancio  
Orange | Orange



I11 - Ambra  
Amber | Ambre